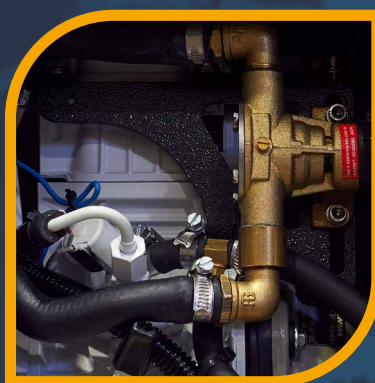


GSi 2500



Control panel



3000 rpm Yanmar engine



Main circuit breaker

We offer now what others will do tomorrow.



GenSet s.p.a.

Via Stazione 5 - 27030
Villanova d'Ardenghi (PV) - Italy
Phone: +39-0382-5091

commercial@genset.it
www.genset.it

GenSet
Next Gen technology
for top business.

**MARINE POWER GENERATOR
OUTPUT POWER 2 kW SINGLE-PHASE
YANMAR DIESEL ENGINE 3000 RPM
SILENCED VERSION**

AC generator - 50Hz

- Type: synchronous, 2-poles, self-regulated, self-excited, brushless
- Cooling: Air/water (Intercooler W/A)
- Max. power: 2 kW
- Continuous power: 1,7 kW
- Voltage (V): 115 - 230
- Amps: 17,4 - 8,7
- Power factor: $\cos \phi$ 1
- Voltage stability: $\pm 10\%$
- Frequency stability: $\pm 5\%$
- Battery charging output (A-V): 10-12
- Safety stop for high coilings temperature
- Rotor dinamically balanced
- Rotor and stator epoxy resin coated against external agents

**Diesel Engine
3000 rpm**

- Type: Yanmar L48N - 1 cyl. - 4,2 hp (3,1 kWm) - 219 cm³
- Starting system: electric (12Vdc)
- Fuel consumption @ 100%: 0,7 lt/h
- Easy access in case of maintenance of feeding system, lubrication system, sea/water pump and air filter
- Double vibration dumping system
- Oil filter and fuel filter easy to replace
- Oil drain pump provided
- Safety stop in case of low oil pressure
- Safety stop in case high engine temperature or exhaust gas temperature

Standard Features

- Controller with digital display for full monitoring of generator parameters: manual start, Vac voltage, frequency Hz, engine rpm, hourmeter, genset battery voltage, engine oil pressure, low oil pressure alarm, engine temperature, engine pre-heating, high engine temperature warning and shutdown alarm, high alternator temperature warning and shutdown alarm, alarms history, maintenance warning + 10 mt connection cable
- Emergency stop button
- Thermal protection

**Accessories
on request**

- Siphon break
- Filter kit
- Exhaust kit
- Separator and exhaust advice
- Insulated two poles kit

Noise level

- 54 dBA @ 7mt

Other features

- Insulation Class: H
- Ambient temperature: 40 °C (*)
- Altitude: 1000 mt (*)
- Mechanical Protection: IP 23
- Dimensions (L x W x H): 500 x 380 x 465 mm
- Dry weight: 80 Kg
- Max. inclination: 30°
- Water pump flow (l/min): 20
- Cooling system: intercooler system heat exchanger (sea water/air) that provides the optimal temperature for the best performance and reliability of the gensets despite the on board allocation and the roomtemperature
- Soundproof cabin made of extremely light marine aluminum with very high resistance to external agents

(*) - For altitude and temperature values higher than those listed above, please consult the manufacturer to verify the available power.

In line with our continued development, innovation and voice of costumer program, we reserve the right to change data without notice.